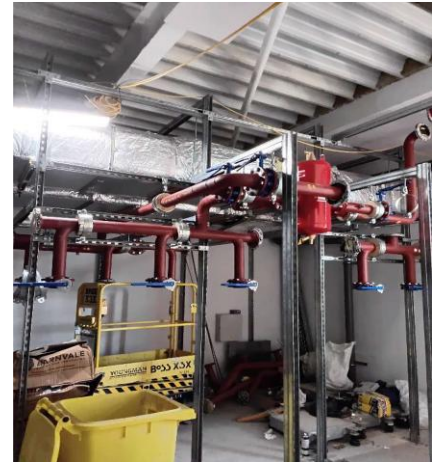


WORKING OUTSIDE AND IN



Progress

During the last month, we have carried out roofing to make the building water-tight, along with the brickwork and cladding which is now virtually complete.

The focus is moving to the internal fit-out works to all ward and office areas.

This includes installing electrical fittings, plumbing, underfloor heating and ventilation, flooring, as well as ceilings. See photographs.

Operational readiness

In parallel to the building work, SPFT is working hard to make the hospital operationally ready.

This involves a lot of detailed planning with all clinical, medical, administrative and Estates and Facilities staff to make sure everything is in place to achieve a modern and therapeutic environment.

This planning is essential to make sure the hospital runs smoothly as soon as it opens its doors to patients.

Arts at Combe Valley

At the end of May, SPFT issued a 'call out' to local and passionate artists to submit proposals for creative and innovative artwork to be installed in the atrium/reception area. The successful artist(s) will be selected by the end of August 2025.

You can find more details here: [Local artists - new mental health hospital needs you](#)

Closing date for submissions is Monday 23 June.

Facts and Figures

During May:

- Average number of workers on site was 120.

We look forward to sharing our next site update in July.

Site opening hours

08:00 – 18:00 (Monday to Friday)

Out of hours contact telephone number:

01604 498830

Kier project office

On Mount View Street

Kier local office

Platinum House, Sussex Manor
Business Park, Gatwick Road,
Crawley, RH10 9NH

Keeping you informed

To find out more now, then please check out the Sussex Partnership NHS Foundation Trust website:

[New Mental Health Hospital for Bexhill: Redesigning Inpatient Services: East Sussex \(RIS:ES\) | Sussex Partnership NHS Foundation Trust](#)

Or Email the Trust at:

esxccg.eastsussex.mh@nhs.net

Or Email Kier at:

RISES.community@kier.co.uk